



METER

ATMOS 14

4-IN-1 TEMPERATURE AND RELATIVE HUMIDITY SENSOR



ATMOS 14 QUICK START

Preparation

Inspect and verify ATMOS 14 components are intact. Installation will require a mounting post.

Set up and test the system (sensors and data loggers) in a lab or office. Ensure the data loggers are using up-to-date firmware and software.

Read the ATMOS 14 User Manual at metergroup.com/atmos14-support/. All products have a 30-day satisfaction guarantee.

ATTENTION

ATMOS 14 requires the most current software and firmware versions. Please make updates as necessary.

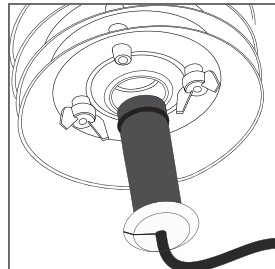
- Em50** firmware version 2.27 or higher
- EM60** firmware version 1.12 or higher
- ProCheck** firmware version 1.69 or higher
- ECH20 Utility** version 1.83 or higher
- ZENTRA Utility** version 1.12 or higher (with EM60)

Go to metergroup.com/environment/downloads to find the current software or firmware version for the data logger being used.

Installation

1. Check Radiation Shield

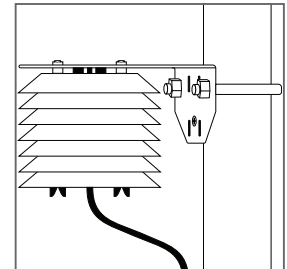
Ensure the sensor is securely installed in the radiation shield.



2. Install on Mounting Pole

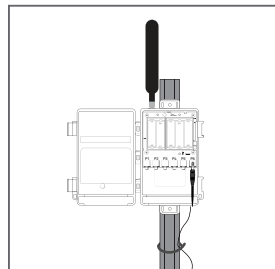
Use the radiation shield mounting bracket and V-bolt to mount the radiation shield to the mounting pole at the desired height.

Use a wrench to tighten the bolts, securing the radiation shield to the mounting pole.



3. Plug Sensor In and Configure Logger

Plug the sensor into the data logger. Use data logger software to apply appropriate settings to the sensors plugged into each data logger port.



SUPPORT

Have a question or problem? Our support team can help.

We manufacture, test, calibrate, and repair every instrument in house. Our scientists and technicians use the instruments every day in our product testing lab. No matter what your question is, we have someone who can help you answer it.

NORTH AMERICA

Email: support.environment@metergroup.com
Phone: +1.509.332.5600

EUROPE

Email: support@metergroup.de
Phone: +49 89 12 66 52 47