



METER

EM60 + EM60G

Solar-Powered Data Logging



EM60 + EM60G QUICK START

Preparation

Inspect that EM60 components are intact. Installation will require a mounting post.

Remove the battery pull-tab inside the EM60. The status lights will eventually settle to a short, single blink every 5 s, signaling it is ready for use. If using the EM60G, attach the antenna.

Install ZENTRA Utility on the field computer and test connectivity.

Read the full EM60 User Manual at metergroup.com/em60-support. All products have a 30-day satisfaction guarantee.

NOTE: The EM60 case is water resistant, not waterproof. In extremely wet environments or environments with prolonged high humidity, enclose a desiccant packet inside the logger or enclose the logger in a waterproof case.

Data Access with ZENTRA Cloud

ZENTRA Cloud is a cloud-based web application to download, view, and share EM60G data as well as change logger configurations. Visit zentracloud.com to access all EM60G data online. A free trial of ZENTRA Cloud is available for new users.

Configuration with ZENTRA Utility

Software Installation

Use the included USB drive or use the ZENTRA Utility Installer link on the EM60 webpage (metergroup.com/em60-support) to download ZENTRA Utility.

EM60 Configuration

METER recommends testing the sensor configuration and EM60 logger communications prior to field installation.

Connect the micro-USB cable to computer and logger.

Open ZENTRA Utility, select the appropriate COM port, and select Connect.

After the instantaneous measurements appear on the ZENTRA Utility main screen, click Settings.

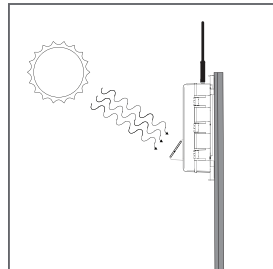
Set the measurement interval and assign each sensor to its respective sensor port. Click OK.

Review sensor instantaneous measurements to verify sensors are working correctly.

Installation

1. Select Location

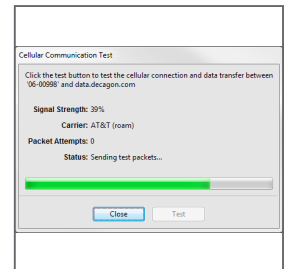
Choose a location and orientation to give the solar panel the maximum amount of sunlight. Consider vegetation cover throughout the season, distance from power lines, livestock, metallic objects (EM60G), etc.



2. Check Cellular Signal (EM60G Only)

In ZENTRA Utility, click Cellular Test to check the quality of the cellular signal at the chosen location.

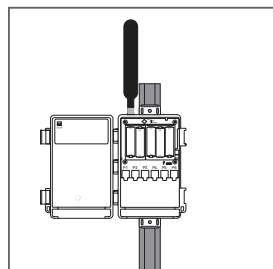
If the test fails, move to an alternative location (sometimes moving only a few meters is sufficient).



3. Fasten Logger to Mounting Post

Use the loopholes on the top and bottom of the logger enclosure to mount the EM60 to a post using zip ties or a similar fastener.

Ensure the logger is installed in an upright position to reduce the possibility of water entering the EM60 enclosure. Orient the solar panels so they receive the maximum amount of light.



4. Install Sensors

Install sensors according to the user manuals. Plug the sensor connectors into the EM60 sensor ports. Secure cables to mounting post with some cable slack.

Configure measurement interval and sensor settings using ZENTRA Utility software. Review sensor instantaneous measurements to verify installed sensors are working correctly.

